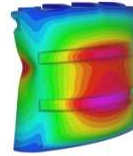


Date: July 2021 to December 2022  
Client: Vanderlande



David Beneke Consulting  
Finite Element Analysis for Engineering

## CONVEYOR SUPPORT STRUCTURES

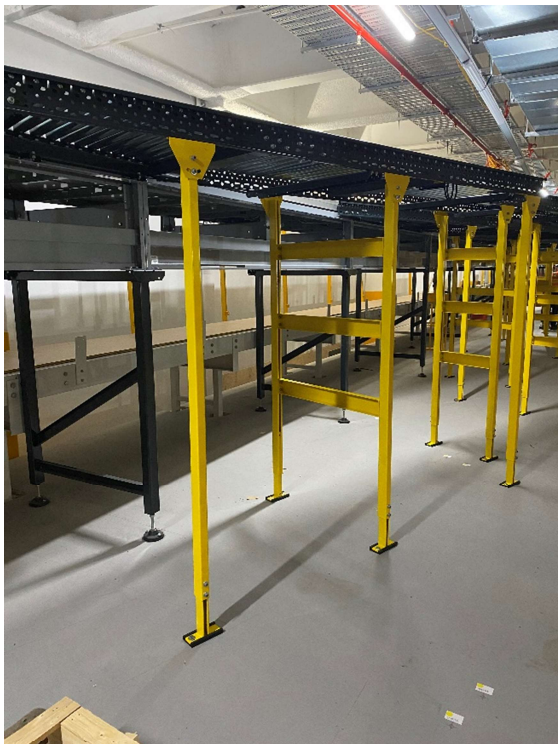
### Project Description:

David Beneke Consulting was commissioned by Vanderlande for two major logistics projects within the Sydney area – Amazon at Kemps Creek and The Western Sydney Airport project at Badgerys Creek. In both cases we undertook 3<sup>rd</sup> Party structural proof checking of the following conveyor support structures:

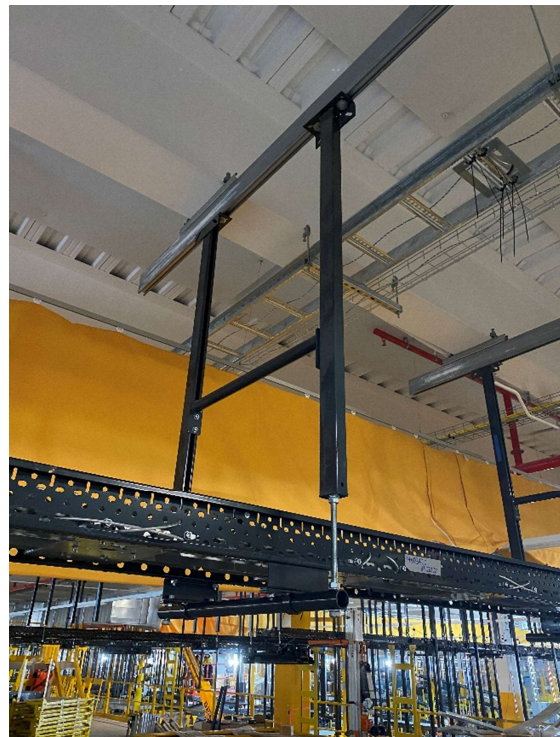
- Floor mounted tote conveyors
- Floor mounted pallet conveyors
- Roof mounted tote conveyors
- Floor mounted baggage conveyors

These structures are generally fabricated from both light gauge and hot rolled steel thus requiring adherence to both AS/NZS4600 and AS4100.

For each conveyor support structure type, our assessment included dead and live loads on the conveyor plus either lateral instability or seismic loads.



Typical base mounted  
conveyor supports



Roof hung conveyor  
supports

Contact:  
dbconsulting@live.com.au  
davidbenekeconsulting.com  
Ph +614 1257 5693  
Unit 38/7 Sefton Rd, Thornleigh NSW