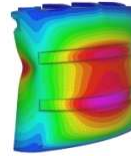


Date: January 2021 to December 2022
Client: Witron Logistics, Bito Lagertechnik and Torri Spa



David Beneke Consulting
Finite Element Analysis for Engineering

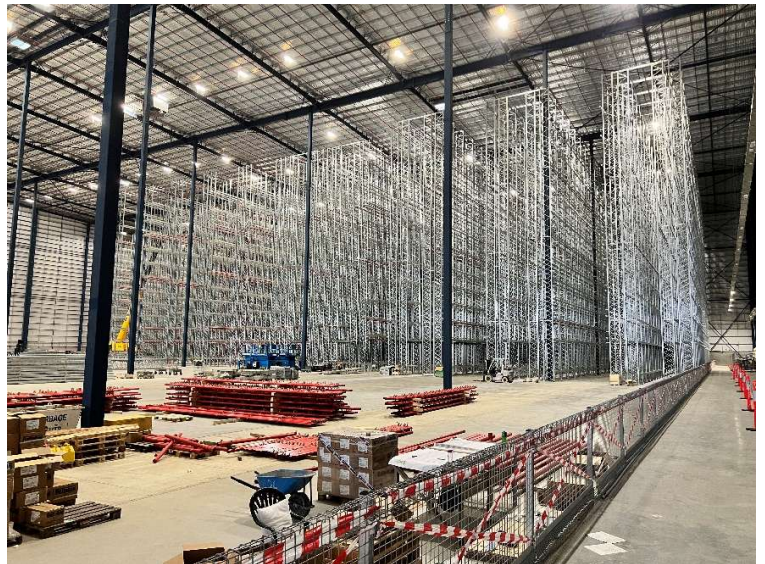
COLES DISTRIBUTION CENTRES SYDNEY AND BRISBANE

Project Description:

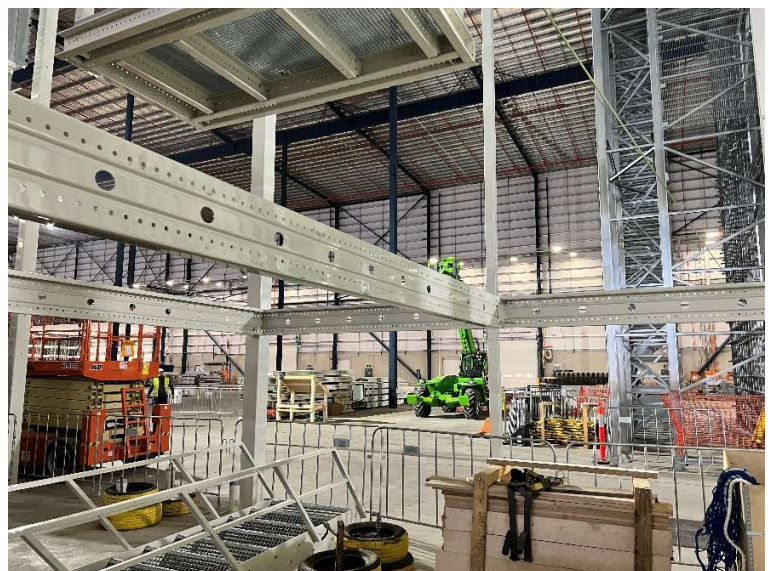
As a part of a major upgrade of Distribution Centres in Sydney (Oakdale West) and Brisbane (Redbank), Coles commissioned Witron Logistics with their sub-contractors Bito Lagertechnik and Torri Spa to provide an automated warehouse distribution system. The critical aspect of these distribution centres was that single carton pallets were fed into the facility and mixed pallets came out with full automation in between. This includes pallet storage, depalletization, tote storage and mixed carton palletisation. Both sites were exactly the same. David Beneke was involved in the following aspects of the project as 3rd Party proof checking engineers:

- Light gauge steel mezzanine floors (commissioned by Torri Spa)
- High Bay ASRS pallet racking (commissioned by Bito Lagertechnik)
- High Bay ASRS tote racking (commissioned by Witron Logistics)
- Tote sequencers (commissioned by Witron Logistics)
- Floor mounted pallet, tote and waste conveyor support structures (commissioned by Witron Logistics)

Our responsibility in regards to the above was to examine the structural design drawings produced by our client and then assess the structure in accordance with the local Standards which include AS/NZS1170.0, AS1170.4, AS4084, AS/NZS4600 and AS4100.



High Bay ASRS Pallet Racking for Bito Lagertechnik



Mezzanine floor beams for Torri Spa under construction with a Witron sequencer beyond.



Mezzanine floor
for Torri Spa

Contact:

dbconsulting@live.com.au
davidbenekeconsulting.com
Ph +614 1257 5693
23 Narabang Way, Belrose NSW 2085